

Scan and Pin

Biometric Solutions

User Manual

Version 4

For additional help and guides, see our support pages at:-
support.scanandpin.com

Related Products

- [Scan and Pin Client](#)
- [Scan and Pin Add New User Wizard](#)
- [Scan and Pin Configuration Editor](#)
- [Activation Codes](#)
- [Fingerprint Scanners](#)

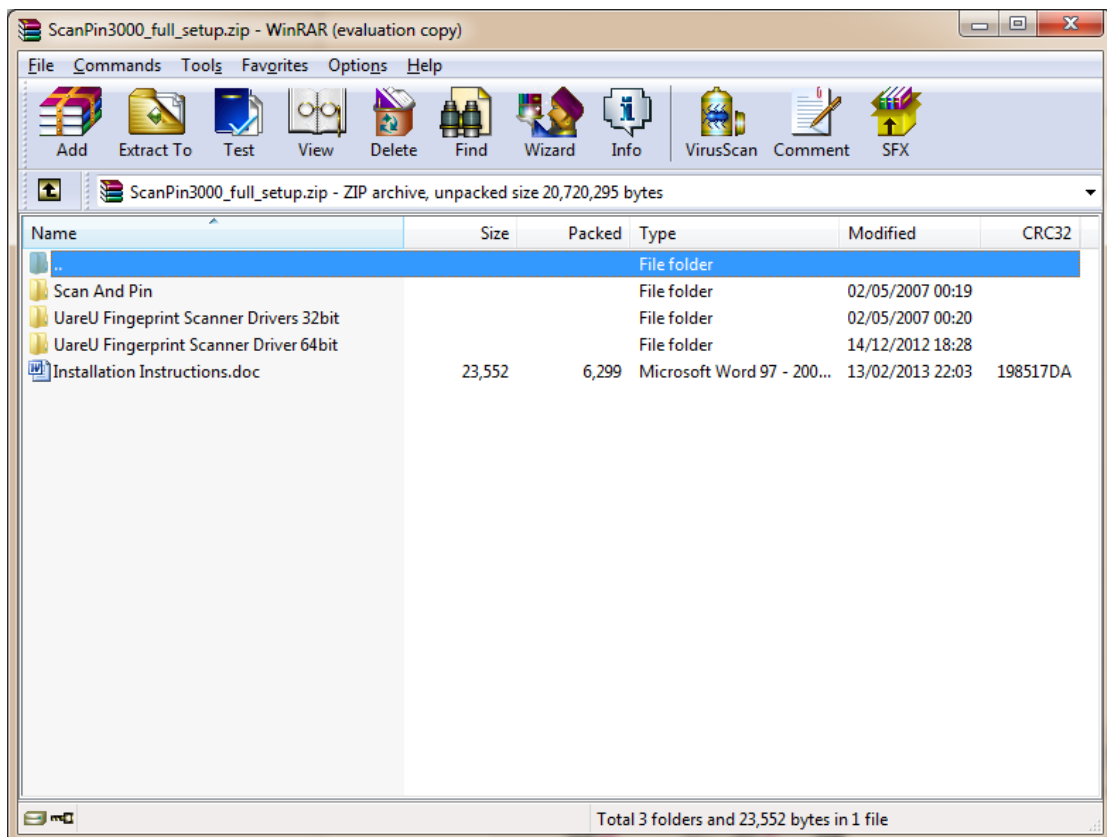
Scan and Pin Requirements

To use Scan and Pin on a Windows PC you need to have the following:

- Digital Persona UareU 4000/4500 series fingerprint scanner
- Windows drivers for Digital Persona UareU 4000/4500 series fingerprint scanner
- Fingerprint Client Activation Code (CAL)
- Scan and Pin Fingerprint Engine
- Scan and Pin Add New User Wizard
- Scan and Pin Configuration Editor

Installation of Scan and Pin

1. Download the Scan and Pin package from www.scanandpin.com/download
This file contains fingerprint scanner drivers and the Scan and Pin fingerprint software
2. Install the Digital Persona U.are.U fingerprint scanner using the drivers downloaded and not from the Digital Persona CD that came with your fingerprint scanner. Ensure to select the correct version for 32/64 bit PC's.
3. **TIME SAVER:** You do not have to restart the PC until all applications and drivers have been installed,
4. Run the Setup.exe file in the Scan and Pin directory to install the Scan and Pin software. Install as an administrator (Right Click Run As Administrator on the Setup.exe file)
5. To ensure correct operation after installation, it may be prudent to update security rights to the Scan and Pin folder at the install location. Security rights should allow USERS access to modify.



Activate Scan and Pin

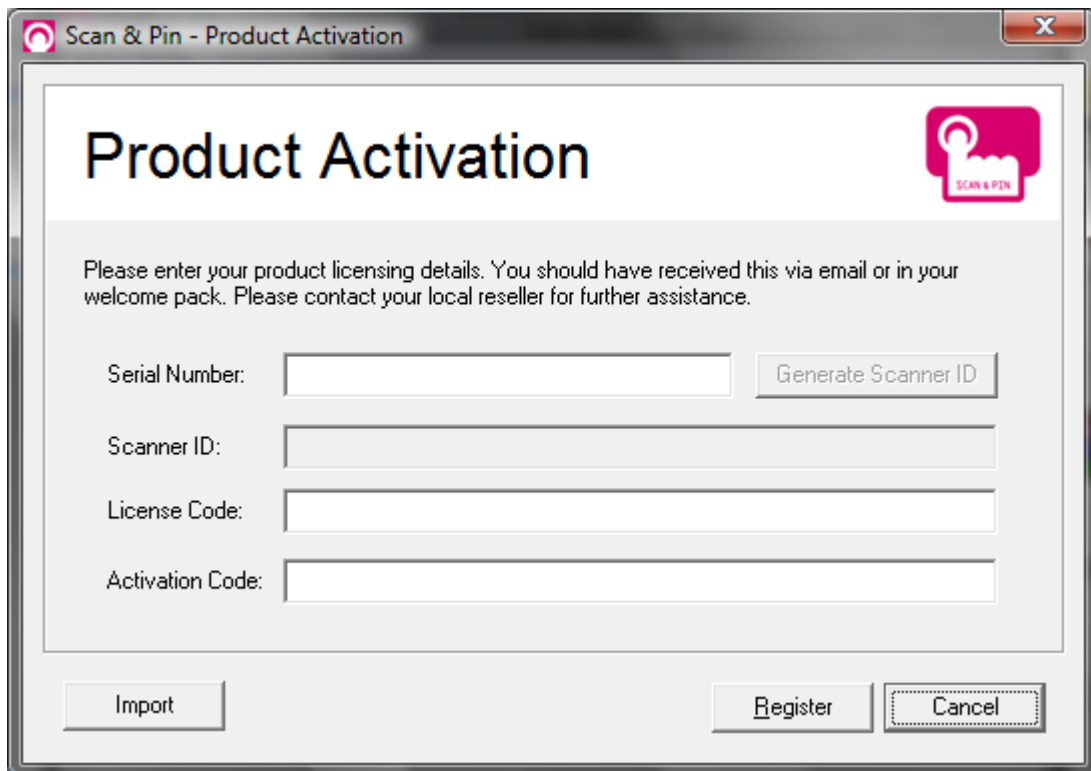
The first time you install and run Scan and Pin, you will be asked to enter a series of codes to activate the software.

You should have received these from your reseller either as individual codes or as a file named 'licence.txt'.

You can choose to either:-

1. Copy and paste the codes to each box or
2. Copy the licence.txt file to the Scan and Pin installation directory.

If you have problems activating your software, please visit support.scanandpin.com and visit the FAQ section or request support using the links online. Please enclose your serial number, licence code and activation code.

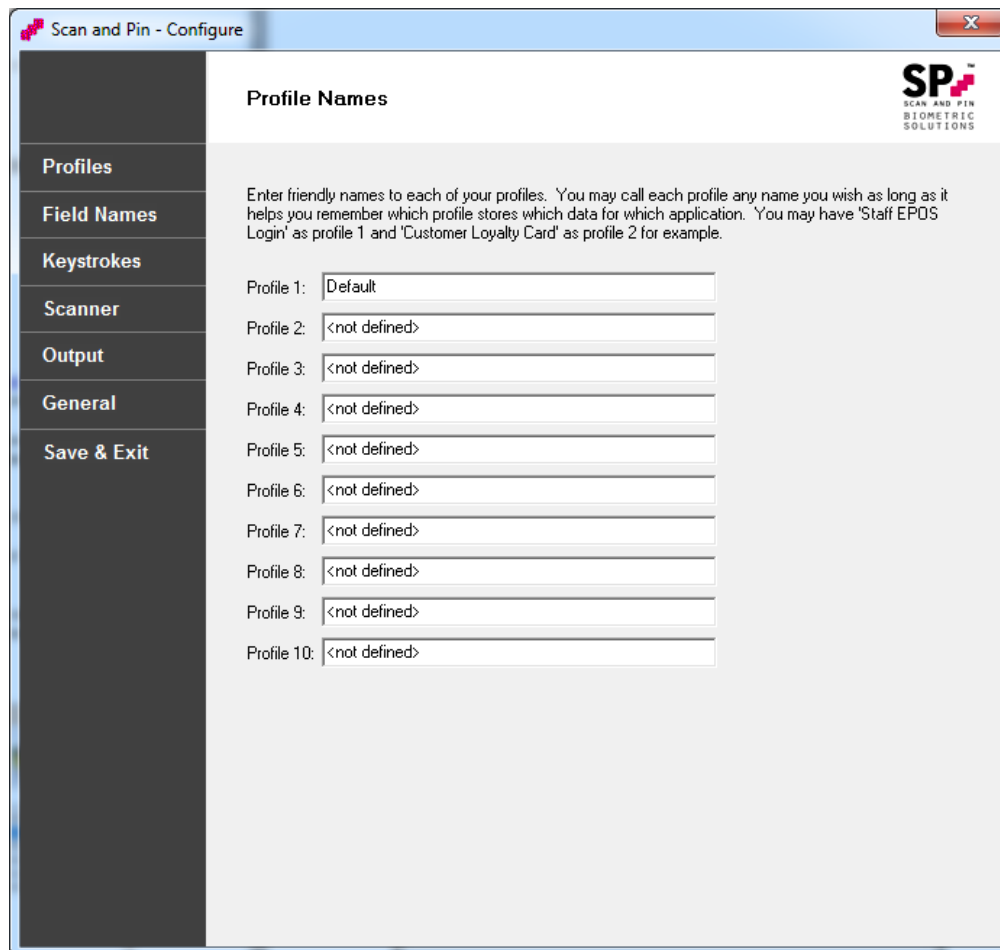


The image shows a Windows-style dialog box titled "Scan & Pin - Product Activation". The main heading is "Product Activation" in a large, bold font. Below the heading is a small icon of a hand with a fingerprint being scanned, with the text "SCAN & PIN" underneath. A paragraph of text reads: "Please enter your product licensing details. You should have received this via email or in your welcome pack. Please contact your local reseller for further assistance." Below this text are four input fields: "Serial Number:", "Scanner ID:", "License Code:", and "Activation Code:". To the right of the "Serial Number" field is a button labeled "Generate Scanner ID". At the bottom of the dialog box are three buttons: "Import", "Register", and "Cancel".

Configuration of Scan and Pin

Scan and Pin has its own configuration editor.

Inside the “..\Program Files\Scan and Pin\” directory, run “Config.exe” (or from the Start Menu)



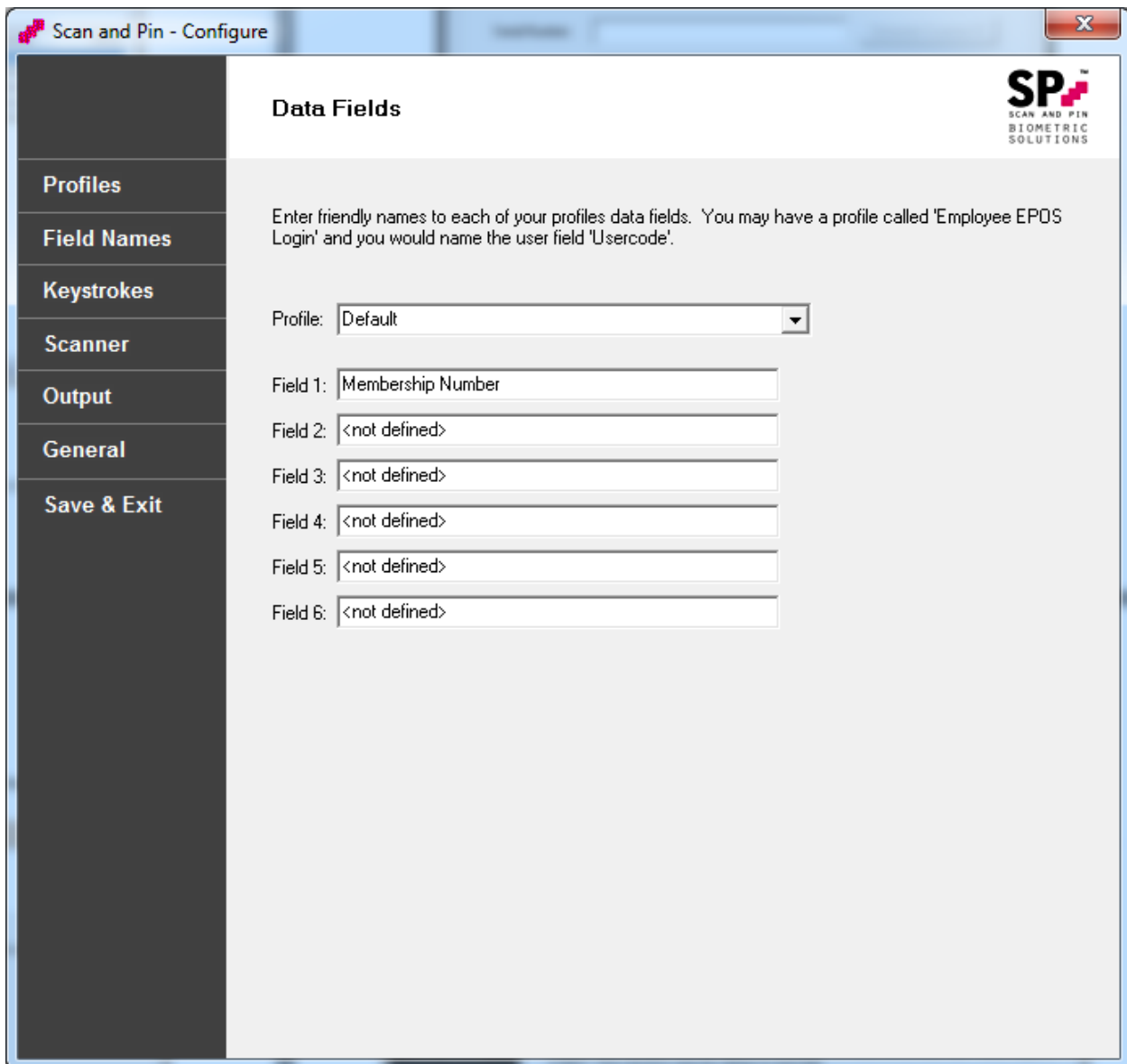
From here you can edit the 10 profile names.

They could be “Customer Loyalty Cards”, “User EPOS Logins” or “Employee Discount Cards”.

What ever you decide, please remember that each fingerprint can only be related to one profile. You employees may have to use three fingers – one for EPOS login when they are working, another for employee discount and a third for their loyalty card.

The default is “Membership”. In the example we changed it to Websites.

You can add friendly names to each of the 6 user data fields assigned to each of the 10 profiles.



Select the profile you wish to configure and click in each field entering a friendly name.

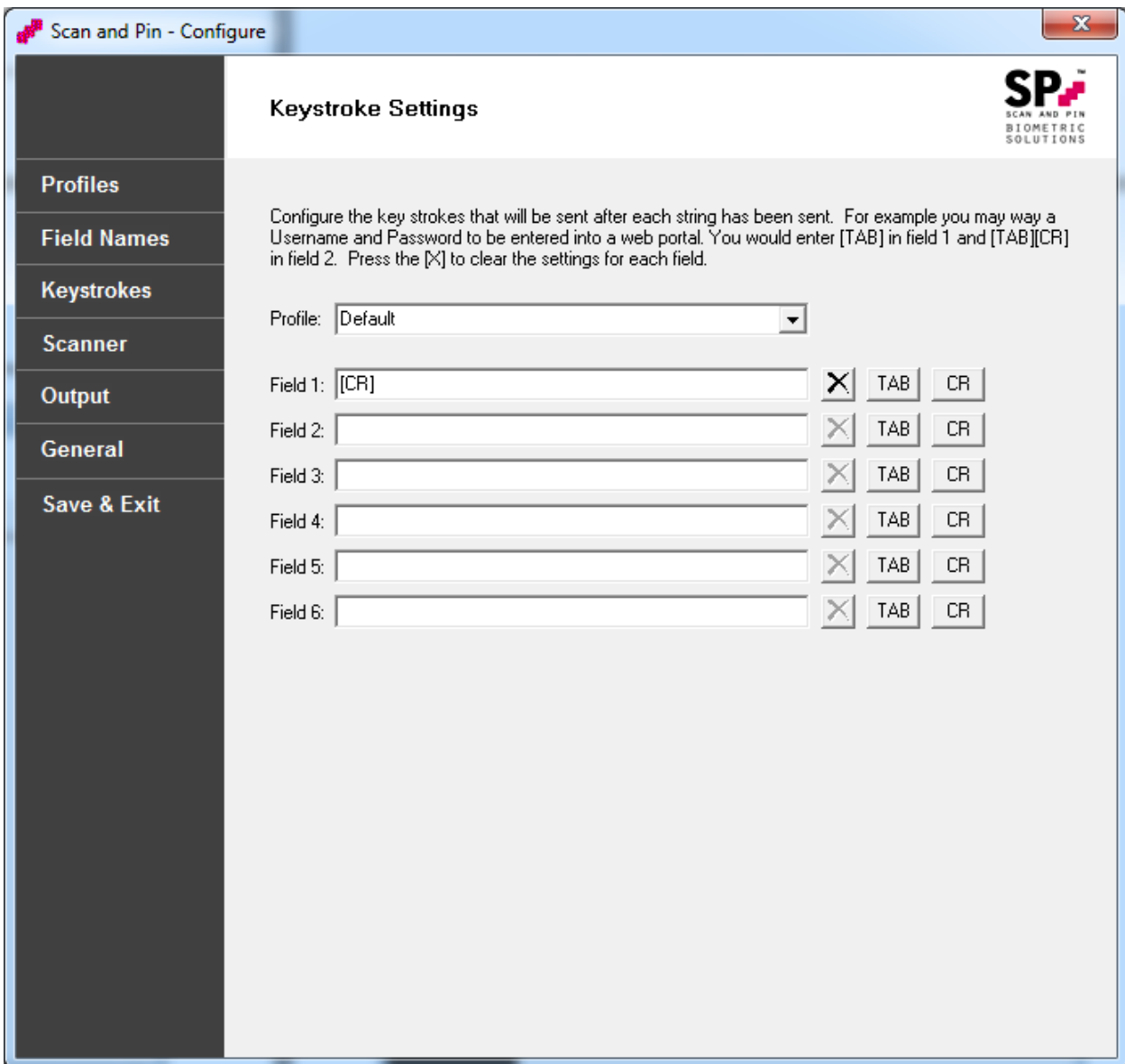
- Example for a Web Portal login:
Field 1 could be "Username" and Field 2 could be "Password"
- Example for employee EPOS login:
Field 1 could be "Employee Login Number" and Field 2 could be "Password"

If you use the word "Password" or "password" [cAsE sensitive], then when a new user is added (using the "Add New User Wizard") then the characters entered will be blanked out.

You can send up to 20 different keystrokes after each user data has been sent.

For example, you may want to automate logon process for a website.

Normally you would enter “*USERNAME*” followed by [TAB] (for the password box), followed by “*PASSWORD*” then [TAB] and finally [ENTER] ([CR]).



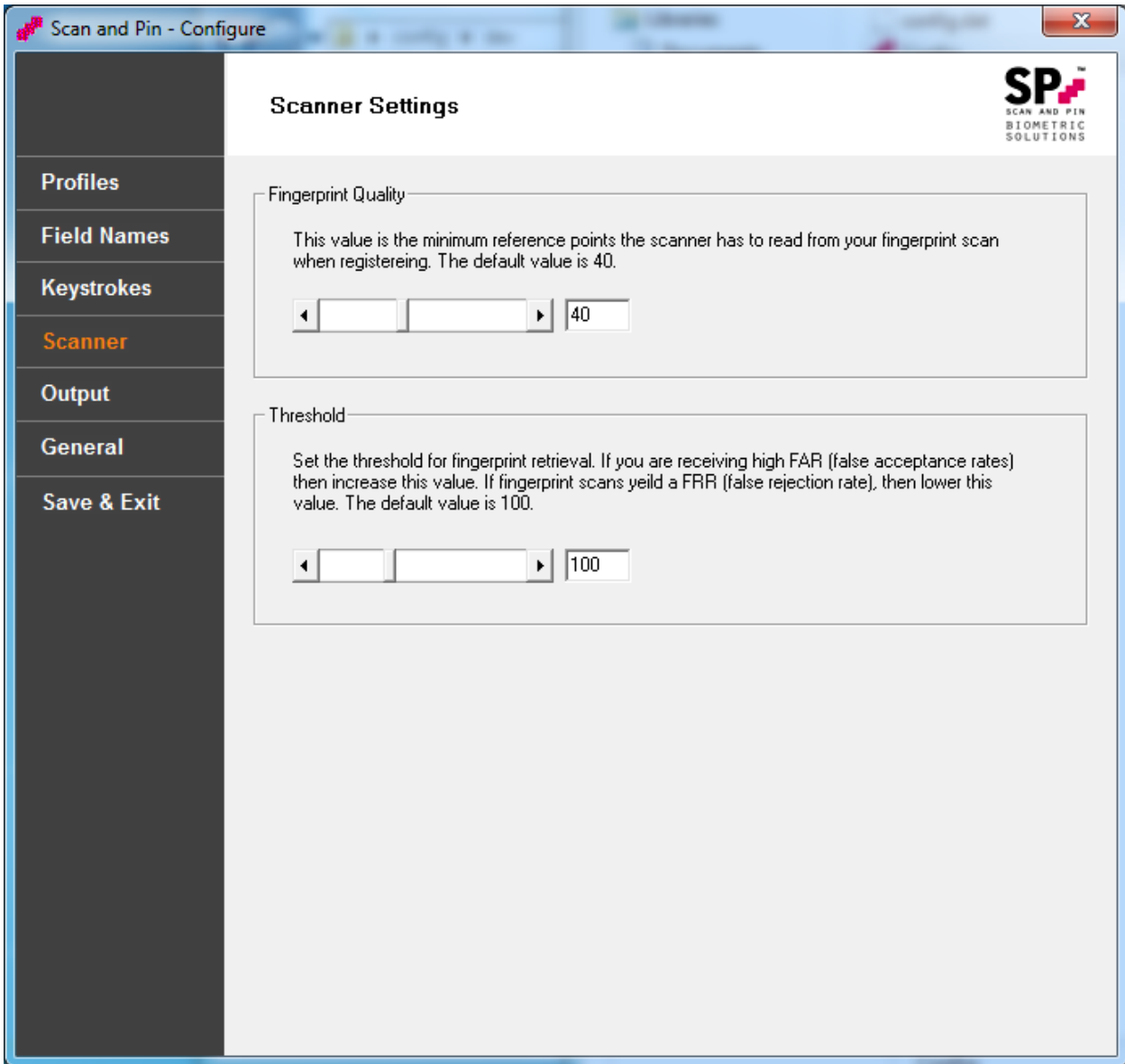
You can specify 20 keystrokes for each of the 6 different user data fields for each of the 10 profiles.

Click the “X” button to clear the options for that string.

Click the “TAB” button to enter a TAB (move between text boxes for example)

Click the “CR” button to enter a Carriage Return (Enter Key/Submit form for example)

The fingerprint scanner can be set to accept a minimum quality for fingerprint enrolment scanning. This is defined under Fingerprint Quality. The lower the level, the less points of reference the scan will require to save the fingerprint scan. The default is 40, but can be adjusted according to your requirements.



Additionally, when verifying a user after enrolment, a threshold value can be set to allow only fingerprint scans which reach this value in near match's are counted as a potential match. This value can be changed according to requirements.

On the Output settings page, you can choose to enable TTL for each fingerprint record. When the fingerprints for a user are taken during enrolment, the current date is recorded against the fingerprint scan. Enabling TTL will allow you to ignore fingerprint scans over a certain amount of days old. It is not enabled by default, but the recommended value is 720 days. You can turn this off and on as you require.

If a record is not found when a user scans their fingerprint, you can choose to send a default value back, for example "NOT FOUND" or "0000" as the user string. This data will be sent to the active window.

If the keyboard entry is too fast, you can slow this down for older systems. Default is 500ms.

You are now able to send the data to a window by name. You can get the actual name from the Task Manager. Paste it in here

The screenshot shows a Windows-style configuration window titled "Scan and Pin - Configure". On the left is a dark sidebar with menu items: Profiles, Field Names, Keystrokes, Scanner, Output (highlighted in orange), General, and Save & Exit. The main area is titled "Data Output Options" and contains several sections:

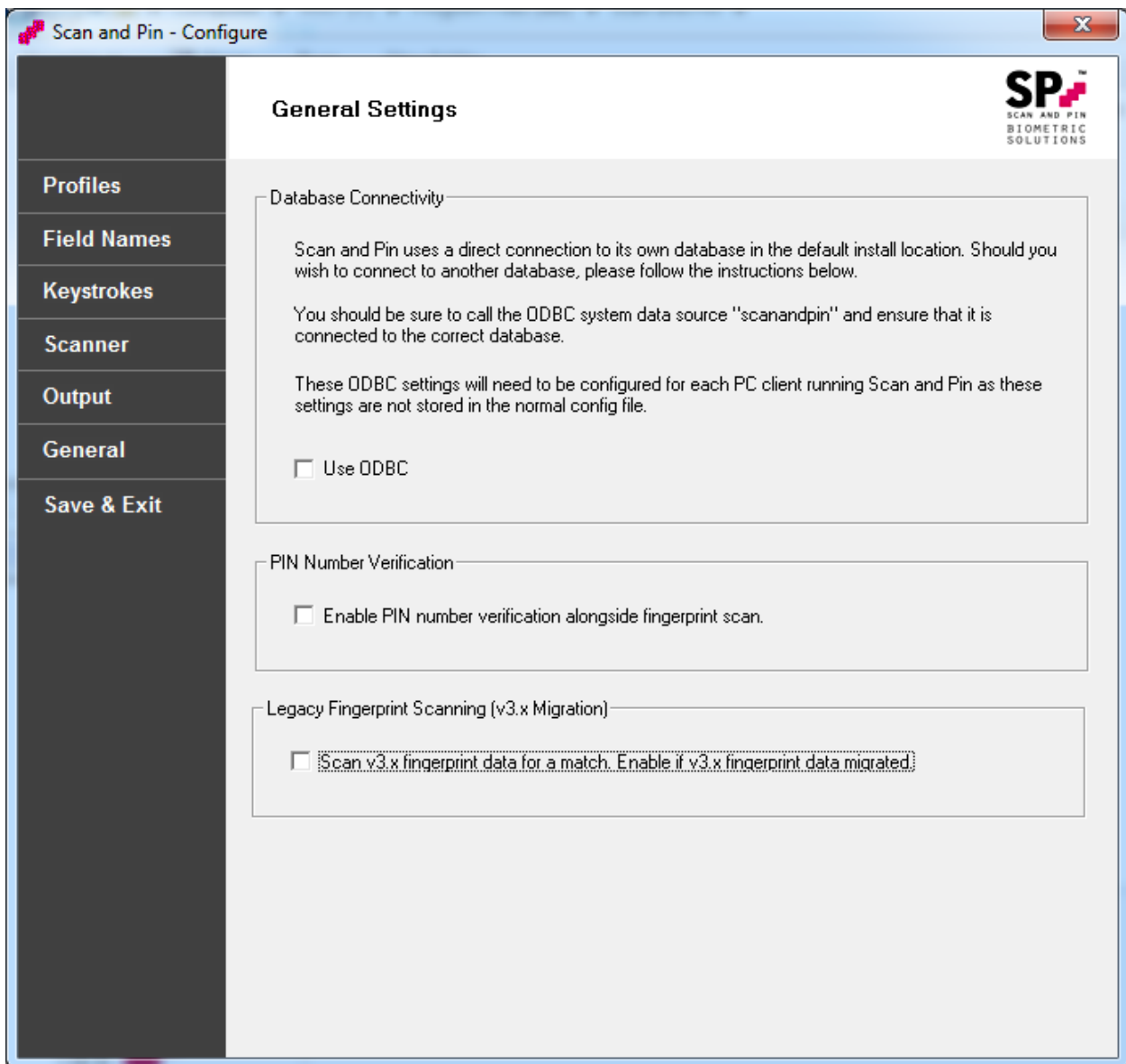
- Fingerprint Record Expiry Date:** Includes a checkbox for "Enable TTL (Time To Live)". Below it, text reads "Speed up searching by ignoring registered fingerprints older than x days. Default value is 720 days." A text box contains "720" followed by "days".
- Start of Output Stream:** Includes a checkbox for "Send [*] before data field on successfull fingerprint scan." (Note the typo "successfull").
- No Match:** Text reads "Send this string if no matching record found." Below is an empty text box.
- Output Delay:** Text reads "Delay between data fields sent to application." Below is a text box containing "500" followed by "milliseconds".
- Window Name:** Text reads "Send the output of all fingerprint scans to the a window of this name." Below is an empty text box.

The Scan and Pin logo is visible in the top right corner of the main area.

Scan and Pin database can be the default MS Access DB, which can handle up to 20,000 fingerprint records, scanning in just under 7 seconds (i7 processor), or alternatively you can choose SQL server. The DSN name for SQL is "scanandpin" with a username and password of the same.

Enabling PIN number verification will ask for a PIN number during enrolment and during verification. If during verification the user forgets their PIN number, you can leave it blank to search all records. This option is useful for additional verification purposes and to reduce the records the database is scanned for, ensuring a more accurate match is made.

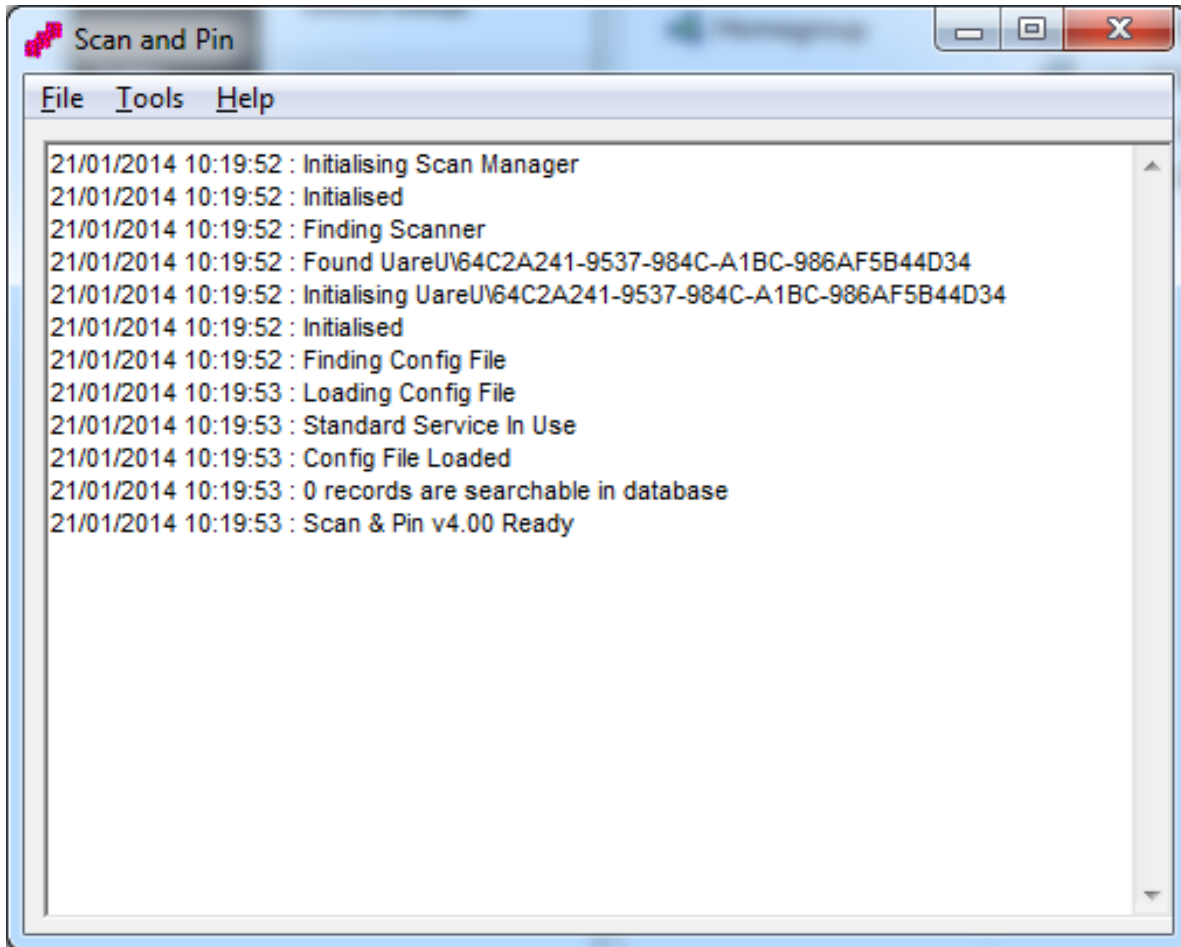
The PIN number can be up to 6 numbers long to incorporate Date of Birth if you so wish.



Running Scan and Pin

Double click "Program Files\Scan and Pin\Client.exe" to launch the Scan and Pin client.
You may also add a shortcut to the start up menu.

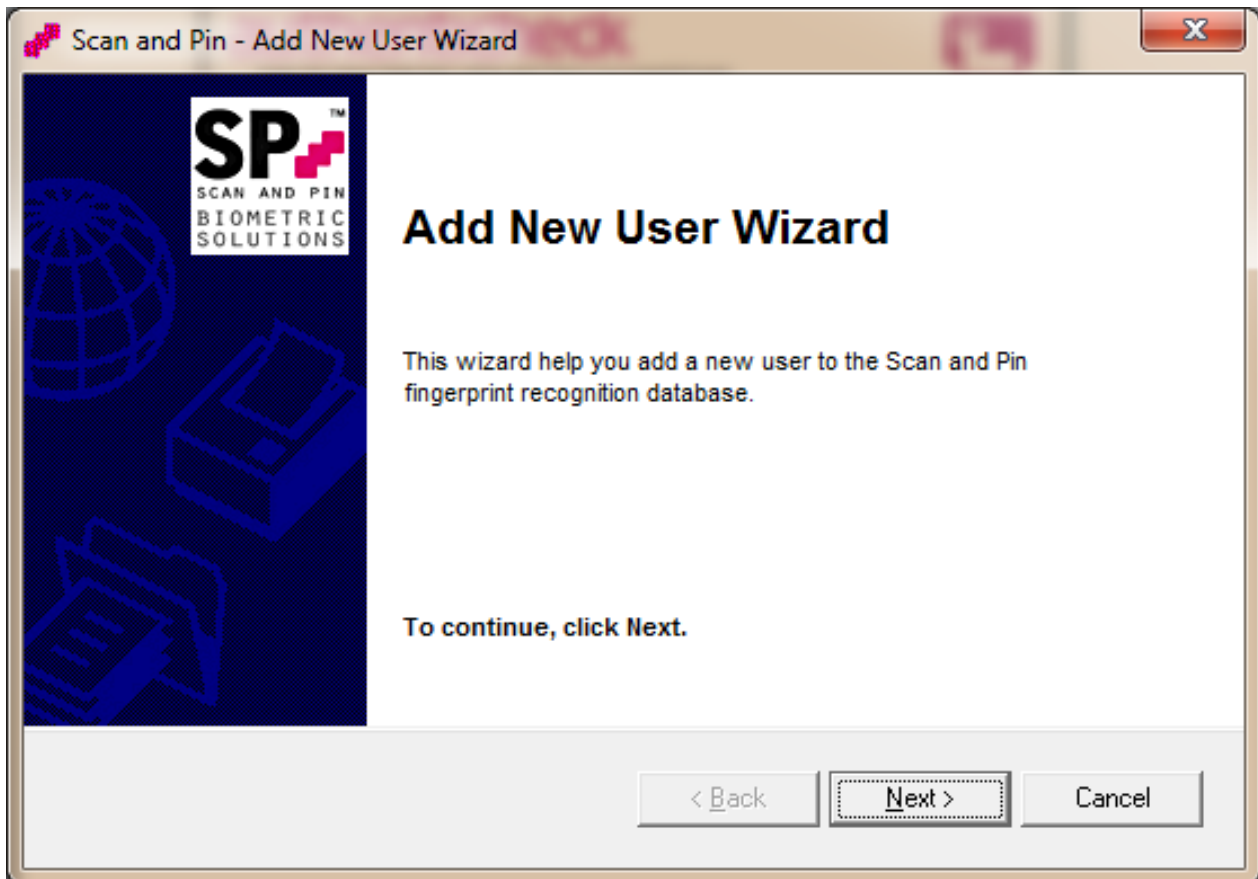
The client will minimise itself to the system tray after 5 seconds. Right click on the icon for further options.



Adding new users using Add New User Wizard

Adding a new user is simple using the included wizard.

Run Scan and Pin Add User from the Start menu, or (run the "Program Files\Scan and Pin\AddUser.exe" file.



Enter a username or login name into the user fields... In fact - anything you want [typed] in to the PC automatically when your finger is scanned.

If the field is left blank then the data will not be sent and that includes the extra keystrokes assigned in the configuration editor.

Scan and Pin - Add New User Wizard

Enter the data that will be sent from a successfull scan

Enter the users data in the fields below

| | |
|---------------|---------------|
| Login | <not defined> |
| 12345678 | |
| Password | <not defined> |
| ***** | |
| <not defined> | <not defined> |
| | |

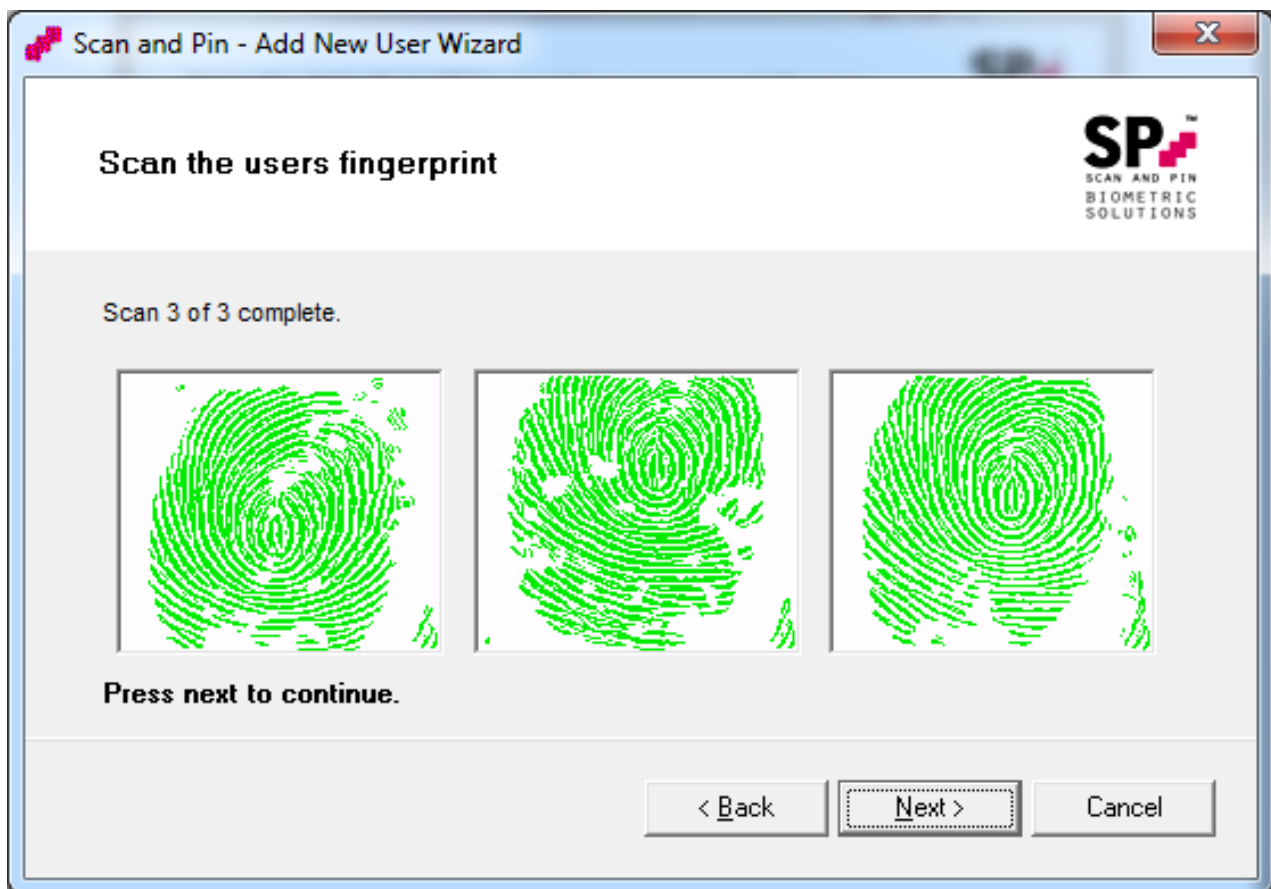
< Back Next > Cancel

Scan your finger on the fingerprint reader as instructed.

The wizard requires 3 fingerprint scans from the same user's finger.

The minimum accepted level is set in the configuration editor (default 40). If lower than that, the message will show a poor scan was received and the user should scan their finger again.

During verification, the user will be required to scan their finger only once, not three times.



If PIN verification is enabled, you will be asked to enter a PIN number during enrolment and verification. If you choose to collect PIN numbers during enrolment but then change your mind, you can turn off the PIN number option in the configuration editor.

Scan and Pin - Add New User Wizard

Save the new users information

Please enter PIN number for additional verification (0-6 digits).

PIN number

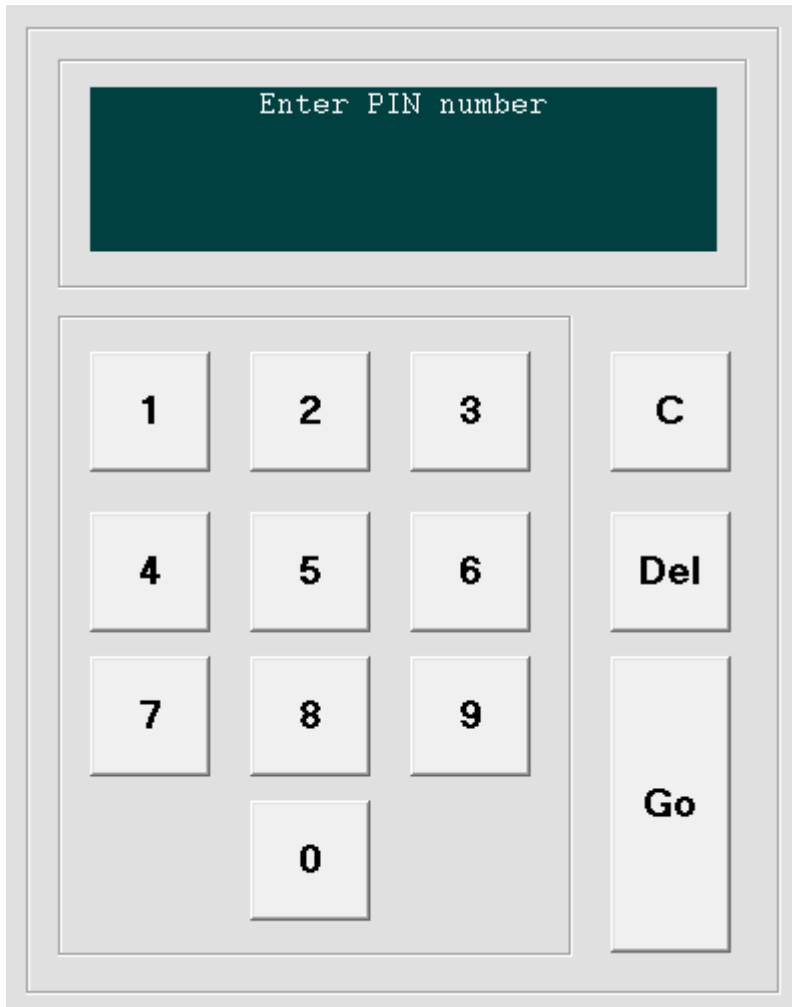
To complete the wizard, click Next.

< Back Next > Cancel

You should now see this screen telling you that the user has been added to the database and prompts you to add another user.



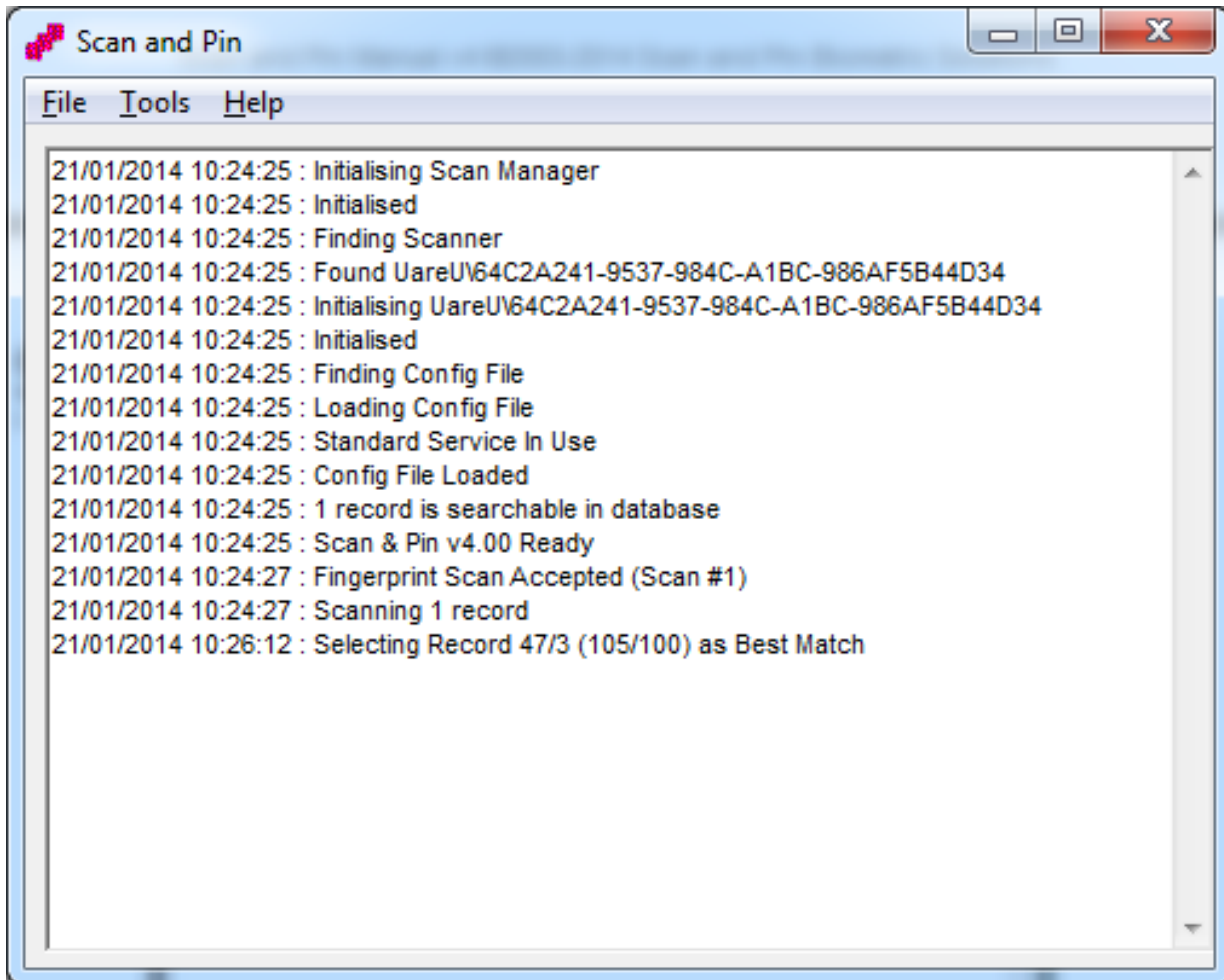
During verification, if PIN number verify is enabled, you will see a PIN entry box like this show up. You can enter the PIN number using the keyboard or by pressing the buttons (usefully for touch screen).



Testing Scan and Pin after a new user has been added is simple. You should only need to follow the directions below (opening notepad for testing) whilst you are configuring the system for your needs.

Restore the Scan and Pin client window (right click on icon and select "restore").

Using the finger that has just been edited press it down on the finger print scanner.



As a test, opening notepad and make it the focused window will allow output to this window.
(Click on the top of the window with the mouse!)

Scan fingerprint once again and users details are automatically typed into notepad including the extra [TAB]'s and [CR]'s if applicable.

